

Centre of Excellence for Disabled Children & Their Families

York

Stage 1- Feasibility Study



2

Why?

- Current services and support provided in a number of settings
- Cost of developing existing buildings
- The number of Disabled Children and Young People who have their care and support provided for out of York
- Opportunity develop a city wide resource that works closely with Hob Moor Oaks Special School
- Opportunity to deliver even better outcomes for Disabled Children, Young People and their families

3

What is it?

The potential new building that will provide:

- **The setting for a range of support services** which will enable disabled children to remain in their families and in their community, delivered from a safe, accessible space
- **Flexible short break provision** to meet the needs of children and young people with Autism, Learning Disabilities and/or additional health needs
- **Family Intervention Rapid Support Team and Therapeutic Short Breaks** a specialist Clinical Psychology led intensive assessment and intervention service for families with children and young people who have autism and learning disability and challenging behaviour which affects their ability to live in the local community

4

Who, what, where?

Who can use it?

- The support and services within the building will be targeted at disabled children and young people (up to the age of 18yrs and longer where needed) and their families following an assessment.

What workers will be based from the building?

- Workers that provide additional support to disabled children and their families will use and be based from the building. These could include Community and Residential Short Break workers, Child In Need Workers, Social Workers and Managers. Other professionals could also use the building to meet and work with disabled children and their families.

Where will be the new building be located?

- As part of the feasibility work we have looked at a number of sites for a potential new building. The recommended option is located on the site of Windsor House Older Person's Accommodation using part of the Hob Moor School Playing fields

5

What will it achieve?

The services and support within a potential new building will:

- ‘Make York Home’ for all disabled children and young people by reducing the need for out of area placements
- Enable disabled children, young people and their families to be able to access the different support and services on one site
- Ensure families have familiar, consistent professionals working with them throughout their child’s / young person’s journey into adulthood
- Involve the development of community and early intervention support to ensure that residential and specialist services are only used when needed
- Develop FIRST and a therapeutic short break service that can be offered to children and young people in York and neighbouring Local Authorities

6

What does the building need to deliver?

Drivers, design guidelines, requirements

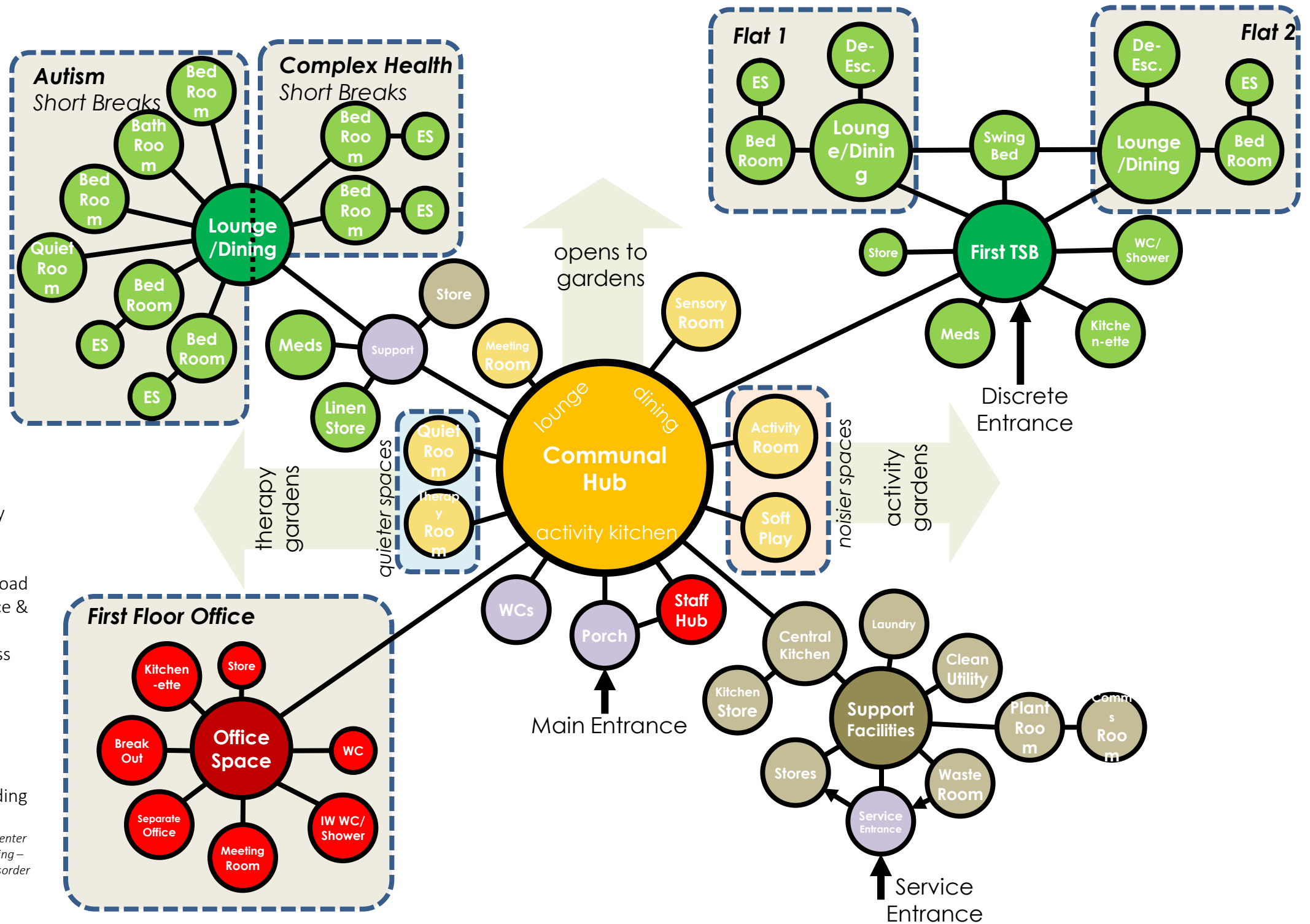
Key Drivers

- Flexibility / Multi-Functional
- Safe
- Therapeutic
- Non-Institutional
- Sensory
- Robust
- Affordable
- Accessible
- Community
- Child/Young-Person Focused
- Simple & Intuitive
- Transformational
- Practical
- Modern/Light/Airy
- Fresh Air

Example Design Guidelines

- Ensure Safety & Security
- Maximise Familiarity, Stability & Clarity
- Minimise Sensory Overload
- Provide Adequate Choice & Independence
- Foster Health & Wellness
- Enhance One's Dignity
- Allow Opportunities for Controlling Social Interaction & Privacy
- Ensure Accessibility & Support in the Surrounding Neighbourhood

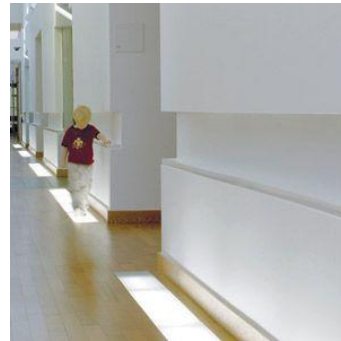
Source: Arizona State University Stardust Center
 Publication: Advancing Full Spectrum Housing – Design for Adults with Autism Spectrum Disorder



7

Design Ideas

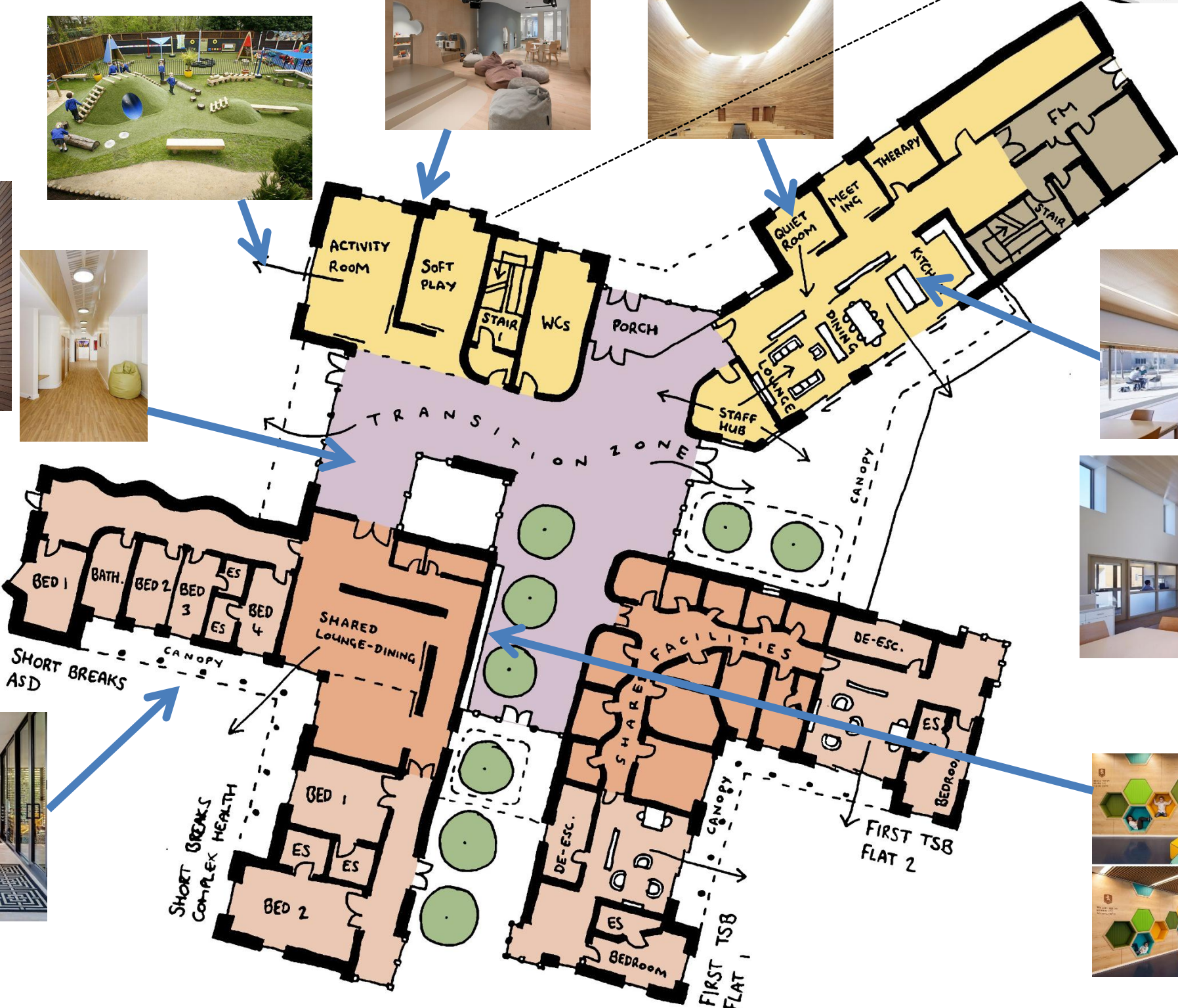
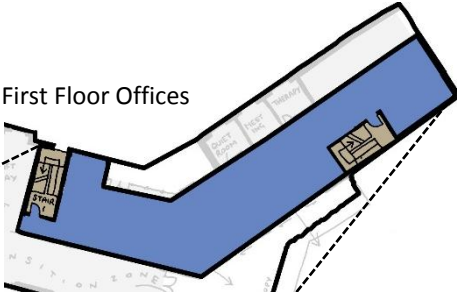
Interior Spaces ideas and suggestions



8

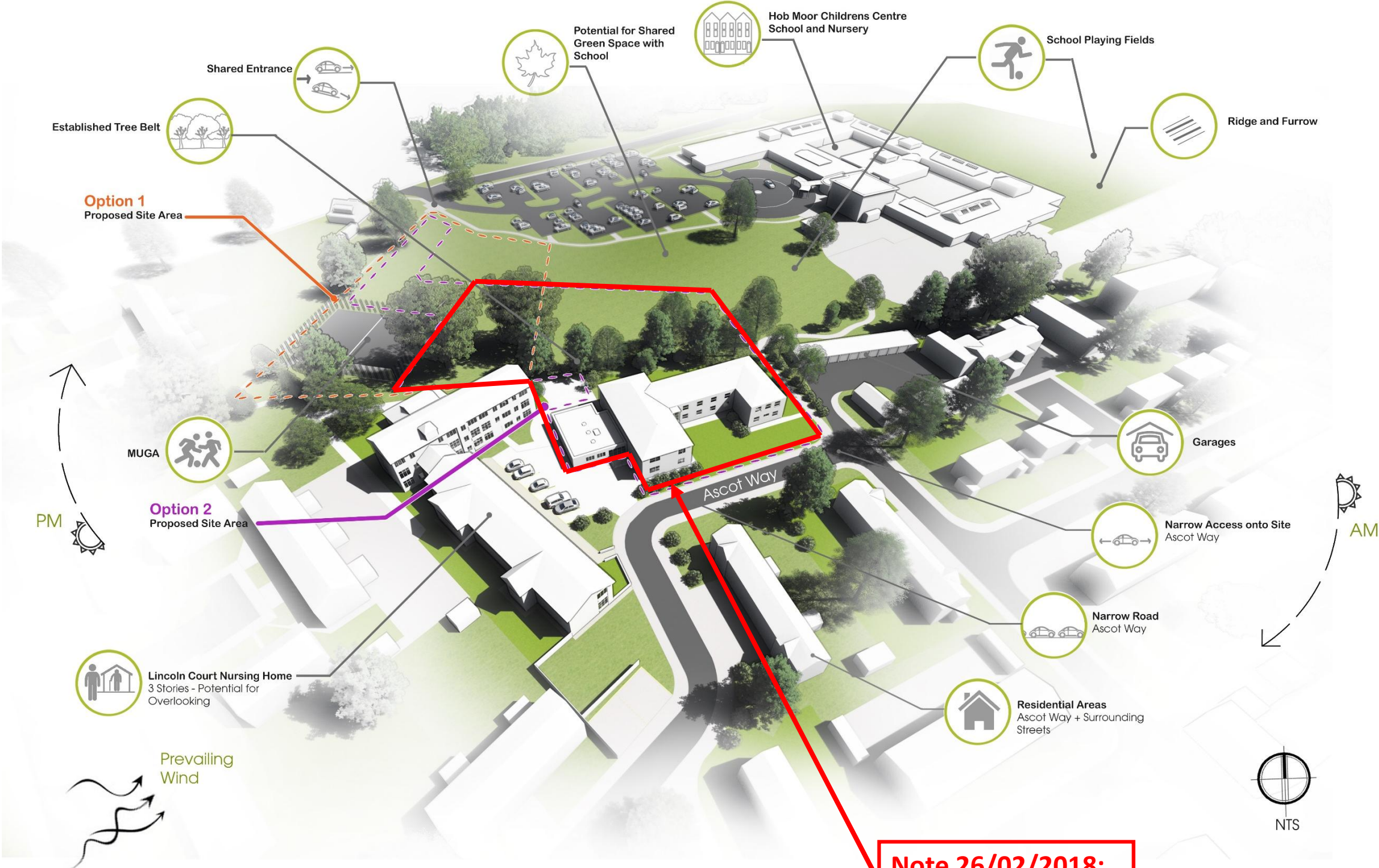
Draft Layout Plan

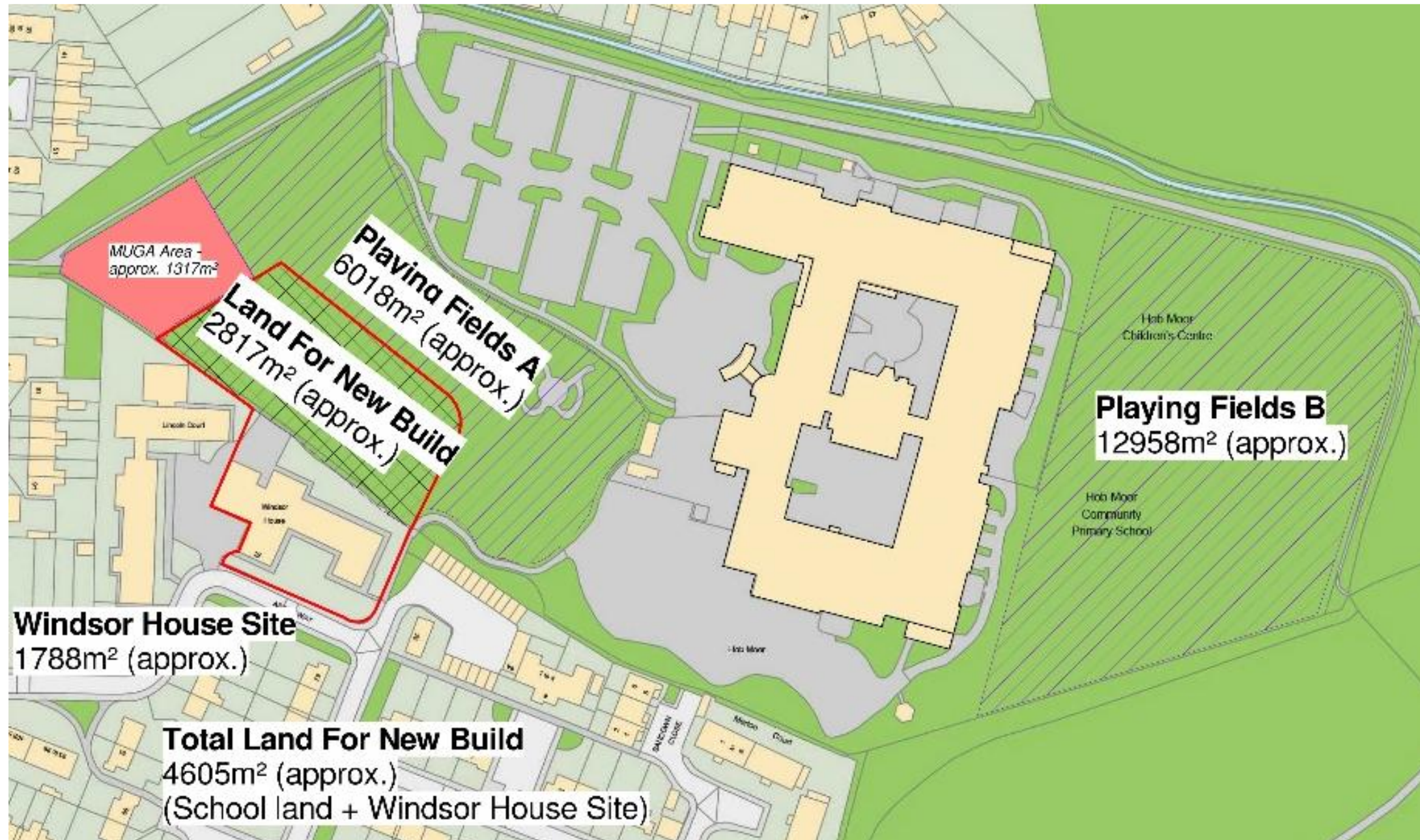
First Floor Offices



9

Site Appraisal

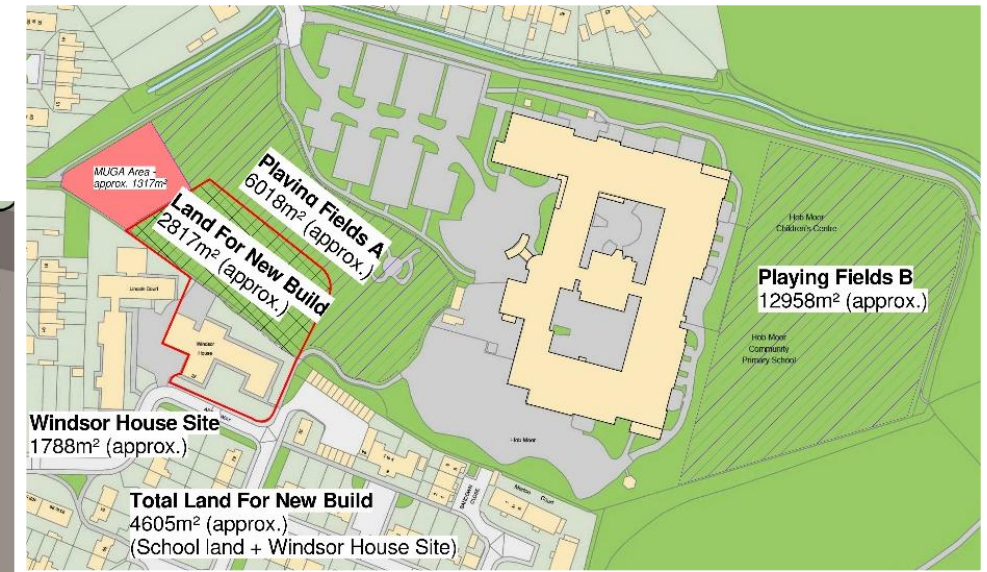




11

First draft option

Windsor House Site & Part Playing Fields



12

Revised detailed Option



13

Concept Overview

Building Approach and Front Entrance



14

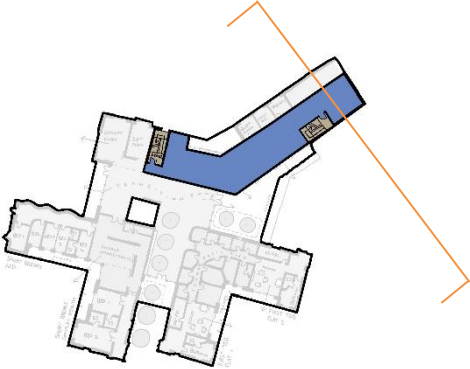
Concept Overview

Rear Private Areas



15

Indicative Section



What difference will it make?

School, Parents / carers, children and young people

